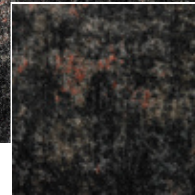


Basalt Art

Polyamide carpet, known for its durability, can be used in any room. One of the most important advantages is the fact that the carpet fibers can stand up to a lot of wear and tear. This makes the use of nylon carpeting especially practical in areas where there is a lot of foot traffic since the synthetic fibers hold their shape longer than many other types of fibers. As a result, the pile of the polyamide carpeting looks new and fresh for many more years than other carpeting selections.

TECHNICAL SPECIFICATIONS

Secondary backing:	Woven Synthetic Backing
Quality code:	BAO
Manufacturing process:	Tufted
Manufacturing process (hospitality):	
Pile composition:	PA
Pile composition (hospitality):	PA
Fire behaviour:	Bfl-s1
EN 1307 Classification:	CI 23 / CI 32



800 / Basalt Art / Ebony



120
Coral



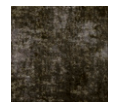
250
Magnolia



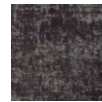
260
Camel



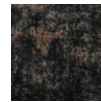
290
Sepia



490
Stone
path



780
Steel



800
Ebony



860
Granite



860
Granite



880
Pearl

Basalt Vintage


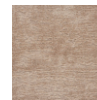
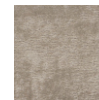




Polyamide carpet, known for its durability, can be used in any room. One of the most important advantages is the fact that the carpet fibers can stand up to a lot of wear and tear. This makes the use of nylon carpeting especially practical in areas where there is a lot of foot traffic since the synthetic fibers hold their shape longer than many other types of fibers. As a result, the pile of the polyamide carpeting looks new and fresh for many more years than other carpeting selections.

TECHNICAL SPECIFICATIONS

Secondary backing:	SB
Quality code:	BAS
Manufacturing process:	Tufted
Manufacturing process (hospitality):	
Pile composition:	PA
Pile composition (hospitality):	
Fire behaviour:	Bfl-S1
EN 1307 Classification:	CL 32



590 / Basalt Vintage / Moss

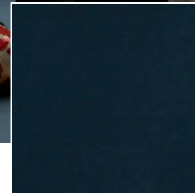
				
010 Tulipwood	110 Carmine	250 Magnolia	270 Almond	280 Havanna
				
300 Mahogany	400 Coffee	410 Leather	420 Cornstalk	460 Hemp
				
490 Stone path	590 Moss	790 Midnight	800 Ebony	810 Charcoal
				
820 Slate	830 Ash	840 Moonshine	880 Pearl	

Bergamo

Polyamide carpet, known for its durability, can be used in any room. One of the most important advantages is the fact that the carpet fibers can stand up to a lot of wear and tear. This makes the use of nylon carpeting especially practical in areas where there is a lot of foot traffic since the synthetic fibers hold their shape longer than many other types of fibers. As a result, the pile of the polyamide carpeting looks new and fresh for many more years than other carpeting selections.

TECHNICAL SPECIFICATIONS

Secondary backing:	KT
Quality code:	BER
Manufacturing process:	Tufted
Manufacturing process (hospitality):	
Pile composition:	PA
Pile composition (hospitality):	
Fire behaviour:	Bfl-s1
EN 1307 Classification:	CL 32



781 / Bergamo / Steel1

001 Elder 1	030 Lilac	100 Ruby	121 Coral 1	130 Rose
140 Old rose	181 Rum 1	220 Acorn	251 Magnolia 1	411 Leather 1
441 Ivory 1	450 Sand	451 Sand 1	651 Jade 1	760 Wedgwood
781 Steel1	790 Midnight	800 Ebony	810 Charcoal	840 Moonshine
860 Granite	870 Silver	880 Pearl	881 Pearl 1	

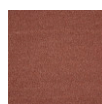
Boulevard

TECHNICAL SPECIFICATIONS

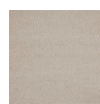
Secondary backing:	Smart Back
Quality code:	BOU
Manufacturing process:	Tufted
Pile composition:	Halcyon



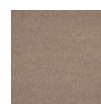
830 / Boulevard / Ash



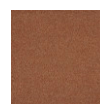
180
Rum



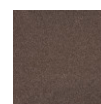
240
Cream



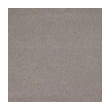
260
Camel



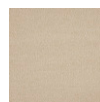
310
Rust



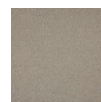
410
Leather



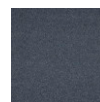
430
Bamboo
mat



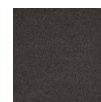
450
Sand



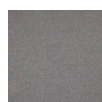
470
Angora



720
Blue cape



820
Slate



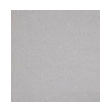
830
Ash



860
Granite



870
Silver



880
Pearl

Euphoria

Polyamide carpet, known for its durability, can be used in any room. One of the most important advantages is the fact that the carpet fibers can stand up to a lot of wear and tear. This makes the use of nylon carpeting especially practical in areas where there is a lot of foot traffic since the synthetic fibers hold their shape longer than many other types of fibers. As a result, the pile of the polyamide carpeting looks new and fresh for many more years than other carpeting selections.

TECHNICAL SPECIFICATIONS

Secondary backing:	Smart Back
Quality code:	EUP
Manufacturing process:	Tufted
Pile composition:	PA



261 / Euphoria / Camel 1

171	241 Cream 1	250 Magnolia	260 Camel	261 Camel 1
370 Gold leaf	441 Ivory 1	451 Sand 1	481 Barley	540 Curry
710 Atlantic	790 Midnight	810 Charcoal	820 Slate	830 Ash
840 Moonshine	850 Moonbeam	880 Pearl		

Evita

Polyamide carpet, known for its durability, can be used in any room. One of the most important advantages is the fact that the carpet fibers can stand up to a lot of wear and tear. This makes the use of nylon carpeting especially practical in areas where there is a lot of foot traffic since the synthetic fibers hold their shape longer than many other types of fibers. As a result, the pile of the polyamide carpeting looks new and fresh for many more years than other carpeting selections.

TECHNICAL SPECIFICATIONS

Secondary backing:	SB
Quality code:	EVI
Manufacturing process:	Tufted
Pile composition:	PA



849 / Evita / Moonshine 9

				
050 Crocus	060 Heather	181 Rum 1	240 Cream	260 Camel
				
391 Copper 1	410 Leather	681 Juniper 1	780 Steel	810 Charcoal
				
820 Slate	830 Ash	849 Moonshine 9	850 Moonbeam	869 Granite 9
				
870 Silver	880 Pearl	890 Snow		

Fairfield Silk - Silk Elite

TECHNICAL SPECIFICATIONS

Secondary backing:	SB
Quality code:	FFS/FSE
Manufacturing process:	Tufted
Pile composition:	Ecceleena



810 / Fairfield Silk - Silk Elite / Charcoal



221
Acorn 1



250
Magnolia



253
Magnolia
3



260
Camel



413
Leather 3



423
Cornstalk
3



433
Bamboo
mat 3



440
Ivory



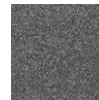
663
Celadon 3



723
Blue cape
3



750
Sky



810
Charcoal



820
Slate



843
Moonshine
3



850
Moonbeam

Fairfield Stripe

TECHNICAL SPECIFICATIONS

Secondary backing:	SB
Quality code:	FAC
Manufacturing process:	Tufted
Pile composition:	PP



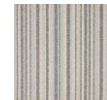
871 / Fairfield Stripe / Silver 1



181
Rum 1



851
Moonbeam 1



871
Silver 1

Fairfield Supreme

TECHNICAL SPECIFICATIONS

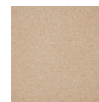
Secondary backing:	SB
Quality code:	FAI
Manufacturing process:	Tufted
Pile composition:	PP



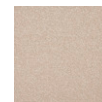
880 / Fairfield Supreme / Pearl



220
Acorn



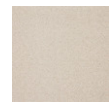
230
Flax



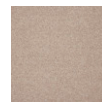
250
Magnolia



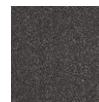
260
Camel



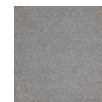
420
Cornstalk



421
Cornstalk
1



810
Charcoal



821
Slate 1



830
Ash



840
Moonshine



860
Granite



870
Silver



873
Silver 3



880
Pearl

Fame Enso

Why ens??

We reduce our carbon footprint at every stage of the life cycle.

Responsible production

- Partly made from recycled materials
- Produced with green power in a sustainable production environment

Responsible consumption

- Outstanding lifespan
- No compromise on style and quality

Responsible end-of-life

- Mono-material with certificate from Ghent University

Recyclable without additional treatment



860 / Fame Enso / Granite

TECHNICAL SPECIFICATIONS

Secondary backing:	EF
Quality code:	FAE
Manufacturing process:	Tufted
Pile composition:	Halcyon



400
Coffee



410
Leather



430
Bamboo
mat



440
Ivory



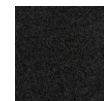
450
Sand



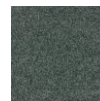
460
Hemp



780
Steel



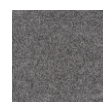
800
Ebony



810
Charcoal



820
Slate



860
Granite



870
Silver

Fascination

TECHNICAL SPECIFICATIONS

Secondary backing:	SB
Quality code:	FSC
Manufacturing process:	Tufted
Pile composition:	Eccelesena



850 / Fascination / Moonbeam



212
Tobacco 2



250
Magnolia



272
Almond 2



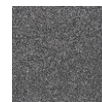
370
Gold leaf



440
Ivory



750
Sky



810
Charcoal



832
Ash 2



842
Moonshine
2



844
Moonshine
4



850
Moonbeam



852
Moonbeam
2



862
Granite 2



872
Silver 2



882
Pearl 2

Felicity

TECHNICAL SPECIFICATIONS

Secondary backing:	Smart Backing
Quality code:	FEL
Manufacturing process:	Tufted
Pile composition:	Halcyon



410 / Felicity / Leather



400
Coffee



410
Leather



430
Bamboo
mat



440
Ivory



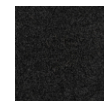
450
Sand



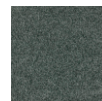
460
Hemp



780
Steel



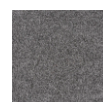
800
Ebony



810
Charcoal



820
Slate



860
Granite



870
Silver

Godiva

Polyamide carpet, known for its durability, can be used in any room. One of the most important advantages is the fact that the carpet fibers can stand up to a lot of wear and tear. This makes the use of nylon carpeting especially practical in areas where there is a lot of foot traffic since the synthetic fibers hold their shape longer than many other types of fibers. As a result, the pile of the polyamide carpeting looks new and fresh for many more years than other carpeting selections.

TECHNICAL SPECIFICATIONS

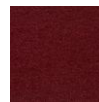
Secondary backing:	KT
Quality code:	GOD
Manufacturing process:	Tufted
Pile composition:	PA



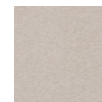
752 / Godiva / Sky 2



072
Violet 2



104
Ruby 4



151
SAHARA
1



182
Rum 2



184
Rum 4



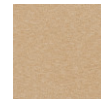
254
Magnolia
4



264
Camel 4



315
Rust 5



381
Bronze 1



552
Apple
mint 2



742
Ocean 2



752
Sky 2



764
Wedgwood
4



821
Slate 1



831
Ash 1



842
Moonshine
2



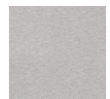
844
Moonshine
4



861
Granite 1



864
Granite 4



871
Silver 1

Granit

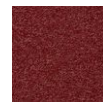
Polyamide carpet, known for its durability, can be used in any room. One of the most important advantages is the fact that the carpet fibers can stand up to a lot of wear and tear. This makes the use of nylon carpeting especially practical in areas where there is a lot of foot traffic since the synthetic fibers hold their shape longer than many other types of fibers. As a result, the pile of the polyamide carpeting looks new and fresh for many more years than other carpeting selections.

TECHNICAL SPECIFICATIONS

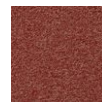
Secondary backing:	SB
Quality code:	GRT
Manufacturing process:	Tufted
Manufacturing process (hospitality):	1/10" Loop Pile
Pile composition:	PA
Pile composition (hospitality):	PA
Fire behaviour:	Cfl-s1
EN 1307 Classification:	Cl. 33 Commercial Heavy



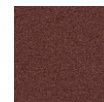
410 / Granit / Leather



110
Carmine



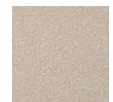
121
Coral 1



134
Rose 4



220
Acorn



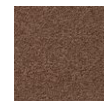
257
Magnolia
7



269
Beige 9



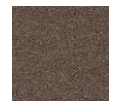
270
Almond



300
Mahogany



400
Coffee



410
Leather



570
Moss



680
Juniper



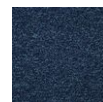
700
Navy



730
Azure



764
Wedgwood
4



793
Midnight
3



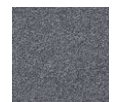
802
Ebony 2



810
Charcoal



819
Charcoal
9



820
Slate



827
Slate 7



842
Moonshine
2



843
Moonshine
3



858
Moonbeam
8

Heathertwist Elite

TECHNICAL SPECIFICATIONS

Secondary backing:

Quality code: LHAE

Manufacturing process: Tufted

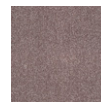
Pile composition: Essenz Solution Dyed



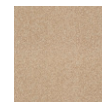
243 / Heathertwist Elite / Cream 3



063
Heather 3



083
Pourpre 2



231
Flax 1



243
Cream 3



281
Havanna
1



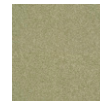
381
Bronze 1



443
Ivory 3



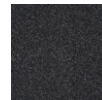
451
Sand 1



551
Apple
mint 1



721
Blue cape
1



803
Ebony 3



815
Charcoal
4



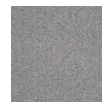
833
Ash 3



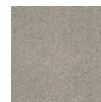
843
Moonshine
3



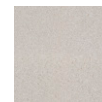
861
Granite 1



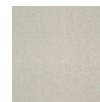
863
Granite 3



881
Pearl 1



883
Pearl 3



890
Snow

Heathertwist Supreme

TECHNICAL SPECIFICATIONS

Secondary backing:

Quality code: LHES

Manufacturing process: Tufted

Pile composition: Essenz Solution Dyed



243 / Heathertwist Supreme /
Cream 3



063
Heather 3



083
Pourpre 2



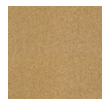
231
Flax 1



243
Cream 3



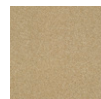
281
Havanna
1



381
Bronze 1



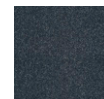
443
Ivory 3



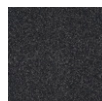
451
Sand 1



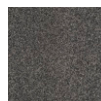
551
Apple
mint 1



721
Blue cape
1



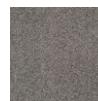
803
Ebony 3



815
Charcoal
4



833
Ash 3



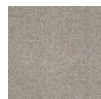
843
Moonshine
3



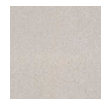
861
Granite 1



863
Granite 3



881
Pearl 1



883
Pearl 3



890
Snow

Illumina

TECHNICAL SPECIFICATIONS

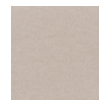
Secondary backing:	Smart Back
Quality code:	ILU
Manufacturing process:	Tufted
Pile composition:	Halcyon



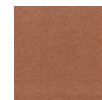
500 / Illumina / Olive



170
Salmon



240
Cream



310
Rust



430
Bamboo
mat



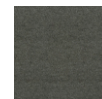
440
Ivory



450
Sand



460
Hemp



480
Barley



500
Olive



680
Juniper



820
Slate



840
Moonshine



860
Granite



880
Pearl

Jade Enso

Why ens??

We reduce our carbon footprint at every stage of the life cycle.

Responsible production

- Partly made from recycled materials
- Produced with green power in a sustainable production environment

Responsible consumption

- Outstanding lifespan
- No compromise on style and quality

Responsible end-of-life







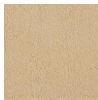
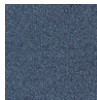



- Mono-material with certificate from Ghent University
- Recyclable without additional treatment

TECHNICAL SPECIFICATIONS

Secondary backing:	EF
Quality code:	JAE
Manufacturing process:	Tufted
Pile composition:	Halcyon



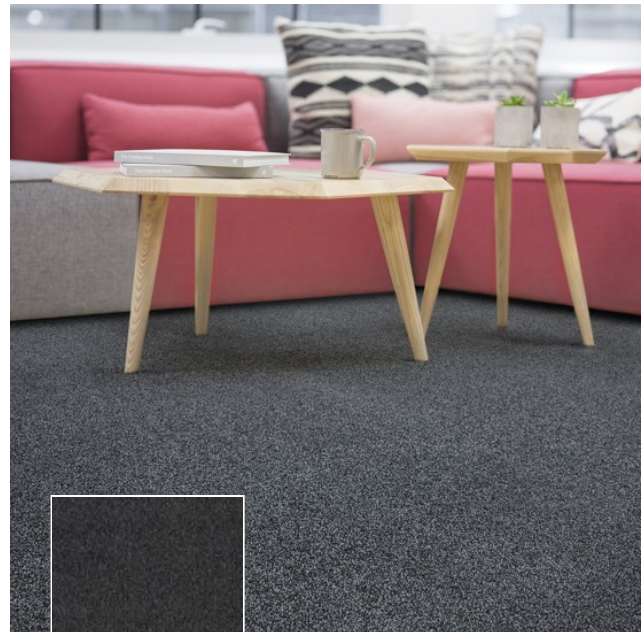
420 / Jade Enso / Cornstalk

				
110 Carmine	180 Rum	250 Magnolia	260 Camel	400 Coffee
				
420 Cornstalk	450 Sand	710 Atlantic	780 Steel	800 Ebony
				
820 Slate	830 Ash	840 Moonshine	850 Moonbeam	

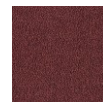
Jade

TECHNICAL SPECIFICATIONS

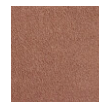
Secondary backing:	SB
Quality code:	JAD
Manufacturing process:	Tufted
Pile composition:	Halcyon Microfibre



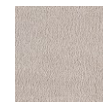
800 / Jade / Ebony



110
Carmine



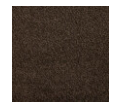
180
Rum



250
Magnolia



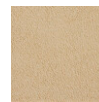
260
Camel



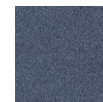
400
Coffee



420
Cornstalk



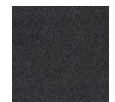
450
Sand



710
Atlantic



780
Steel



800
Ebony



820
Slate



830
Ash



840
Moonshine



850
Moonbeam

Midori ens?

Why ens??

We reduce our carbon footprint at every stage of the life cycle.

Responsible production

- Made from recycled materials
- Produced with green power in a sustainable production environment

Responsible consumption

- Outstanding lifespan
- No compromise on style and quality

Responsible end-of-life

- Mono-material with certificate from Ghent University
- Recyclable without additional treatment

TECHNICAL SPECIFICATIONS

Secondary backing:	EF
Quality code:	MDR
Manufacturing process:	Tufted
Pile composition:	Halcyon recycled



330 / Midori ens? / Apricot

				
160 Muscat	180 Rum	220 Acorn	250 Magnolia	330 Apricot
				
360 Saffron	410 Leather	420 Cornstalk	440 Ivory	450 Sand
				
520 Fern	780 Steel	820 Slate	840 Moonshine	870 Silver

Minerva


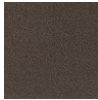
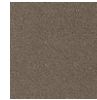





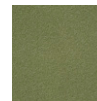
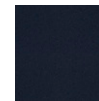
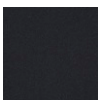
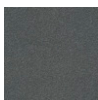
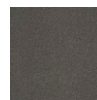
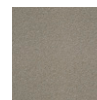
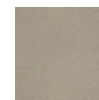
Polyamide carpet, known for its durability, can be used in any room. One of the most important advantages is the fact that the carpet fibers can stand up to a lot of wear and tear. This makes the use of nylon carpeting especially practical in areas where there is a lot of foot traffic since the synthetic fibers hold their shape longer than many other types of fibers. As a result, the pile of the polyamide carpeting looks new and fresh for many more years than other carpeting selections.

TECHNICAL SPECIFICATIONS

Secondary backing:	Woven Synthetic Secondary Backing
Quality code:	MIN
Manufacturing process:	Tufted
Manufacturing process (hospitality):	1/10" 1/10"
Pile composition:	PA
Pile composition (hospitality):	PA
Fire behaviour:	Bfl-s1
EN 1307 Classification:	Cl. 33 Commercial Heavy



850 / Minerva / Moonbeam

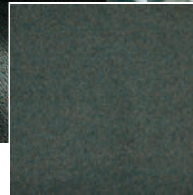
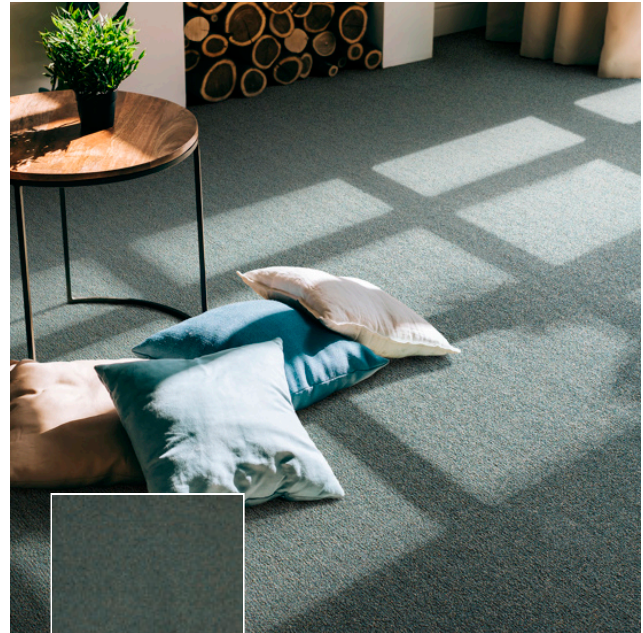
				
120 Coral	210 Tobacco	270 Almond	730 Azure	810 Charcoal
				
820 Slate	850 Moonbeam	870 Silver	481 Barley	701 Navy 1
				
811 Charcoal 1	821 Slate 1	401 Coffee 1	421 Cornstalk 1	431 Bamboo mat 1

Odina

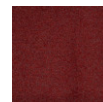
Polyamide carpet, known for its durability, can be used in any room. One of the most important advantages is the fact that the carpet fibers can stand up to a lot of wear and tear. This makes the use of nylon carpeting especially practical in areas where there is a lot of foot traffic since the synthetic fibers hold their shape longer than many other types of fibers. As a result, the pile of the polyamide carpeting looks new and fresh for many more years than other carpeting selections.

TECHNICAL SPECIFICATIONS

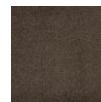
Secondary backing:	SB
Quality code:	ODI
Manufacturing process:	Tufted
Manufacturing process (hospitality):	Tufted
Pile composition:	PA
Pile composition (hospitality):	PA
Fire behaviour:	Cfl-s1
EN 1307 Classification:	CL 23 Commercial General



690 / Odina / Satin jade



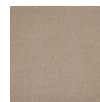
110
Carmine



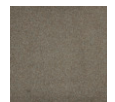
200
Chocolate



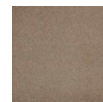
240
Cream



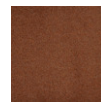
250
Magnolia



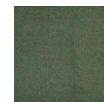
260
Camel



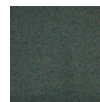
270
Almond



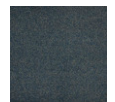
310
Rust



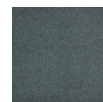
610
Ivy



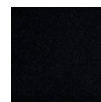
690
Satin jade



710
Atlantic



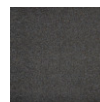
780
Steel



800
Ebony



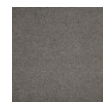
810
Charcoal



820
Slate



840
Moonshine



860
Granite

Pleasure

Polyamide carpet, known for its durability, can be used in any room. One of the most important advantages is the fact that the carpet fibers can stand up to a lot of wear and tear. This makes the use of nylon carpeting especially practical in areas where there is a lot of foot traffic since the synthetic fibers hold their shape longer than many other types of fibers. As a result, the pile of the polyamide carpeting looks new and fresh for many more years than other carpeting selections.

TECHNICAL SPECIFICATIONS

Secondary backing:	KT
Quality code:	PLE
Manufacturing process:	Tufted
Manufacturing process (hospitality):	
Pile composition:	PA
Pile composition (hospitality):	PA
Fire behaviour:	Bfl-s1
EN 1307 Classification:	Cl. 32 Commercial Heavy



220 / Pleasure / Acorn

141 Old rose 1	151 SAHARA 1	181 Rum 1	220 Acorn	240 Cream
250 Magnolia	260 Camel	391 Copper 1	421 Cornstalk 1	620 Savanna
701 Navy 1	760 Wedgwood	791 Midnight 1	801 Ebony 1	810 Charcoal
820 Slate	830 Ash	840 Moonshine	880 Pearl	891 Swow 1

Rumba

Polyamide carpet, known for its durability, can be used in any room. One of the most important advantages is the fact that the carpet fibers can stand up to a lot of wear and tear. This makes the use of nylon carpeting especially practical in areas where there is a lot of foot traffic since the synthetic fibers hold their shape longer than many other types of fibers. As a result, the pile of the polyamide carpeting looks new and fresh for many more years than other carpeting selections.

TECHNICAL SPECIFICATIONS

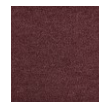
Secondary backing:	FBB
Quality code:	RUM
Manufacturing process:	Tufted
Pile composition:	PA



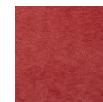
722 / Rumba / Blue cape 2



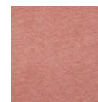
082
Purple



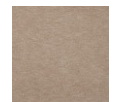
112
Carmine
2



121
Coral 1



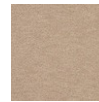
131
Rose 1



221
Acorn 1



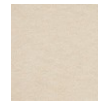
231
Flax 1



239
Flax 9



241
Cream 1



249
Cream 9



252
Magnolia
2



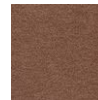
262
Camel 2



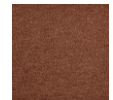
280
Havanna



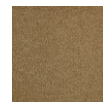
293
Sepia 3



304
Mahogany
4



332
Apricot 2



372
Gold leaf
2



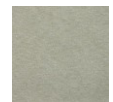
412
Leather 2



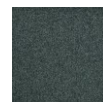
462
Hemp 2



630
Willow



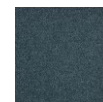
651
Jade 1



682
Juniper 2



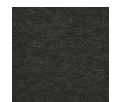
721
Blue cape
1



722
Blue cape
2



764
Wedgwood
4



812
Charcoal
2



820
Slate



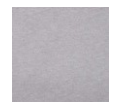
832
Ash 2



851
Moonbeam
1



861
Granite 1



881
Pearl 1

Satine Nova

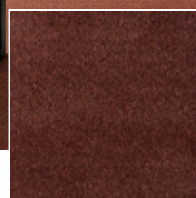
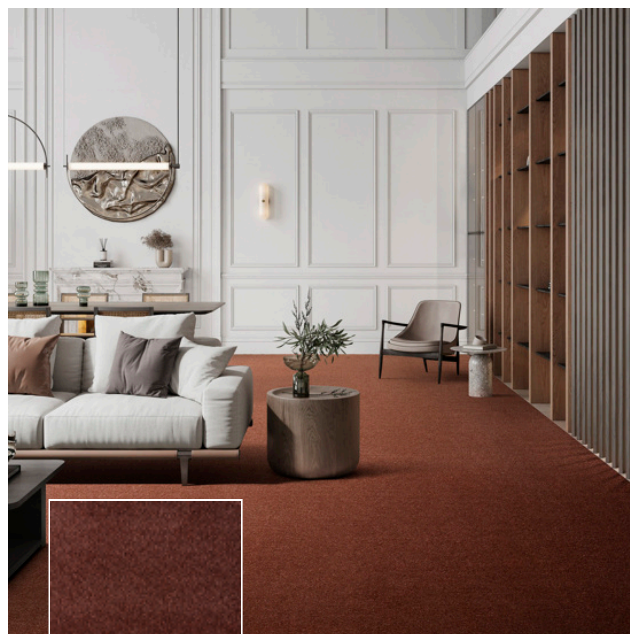
TECHNICAL SPECIFICATIONS

Secondary backing: Smart Back

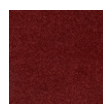
Quality code: SAN

Manufacturing process: Tufted

Pile composition: PA



184 / Satine Nova / Rum 4



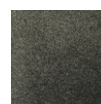
101
Ruby 1



184
Rum 4



194
Chestnut
4



200
Chocolate



243
Cream 3



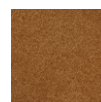
253
Magnolia
3



254
Magnolia
4



264
Camel 4



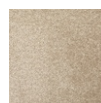
371
Gold leaf
1



410
Leather



414
Leather 4



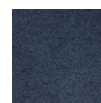
430
Bamboo
mat



434
Bamboo
mat 4



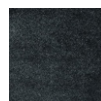
504
Olive 4



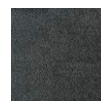
791
Midnight
1



794
Midnight
4



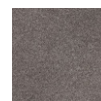
800
Ebony



814
Charcoal
4



824
Slate 4



841
Moonshine
1



844
Moonshine
4



854
Moonbeam
4



864
Granite 4



880
Pearl



884
Pearl 4

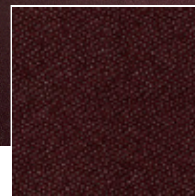
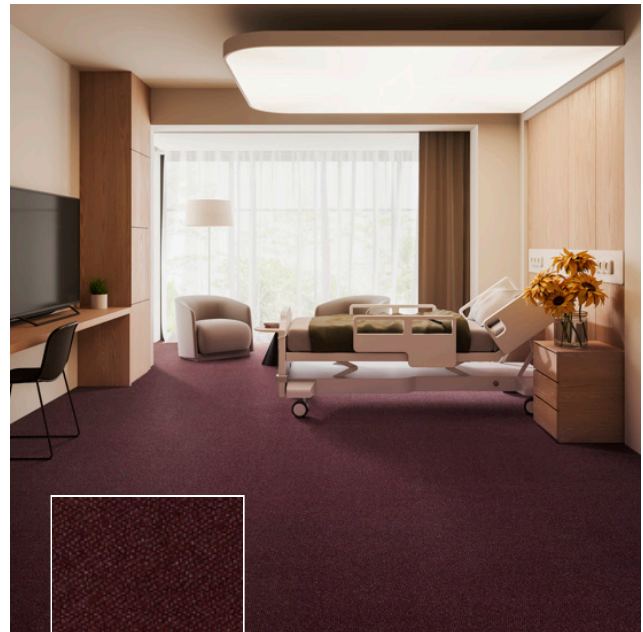
Scala Endurance

Carpet for soft contract applications with a cool twist, that's the Scala Combinations collection. Scala Twist, Scala Fun, Scala Marathon and Scala Endurance, 4 different designs which when combined create a refreshingly innovative result. Puzzle away!

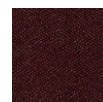
Scala Combinations offers endless possibilities and creativity. All 27 items are of the same durable quality and have the same specifications making them work seamlessly. The colour palette ranges from calm grey and beige tones to fun fresh yet classic colours carefully chosen to always form one beautiful and peaceful whole. Designed for use in Healthcare locations, leisure locations, communal areas and domestic settings.

The Scala Twist has a more classic appearance but looks modern in combination with one of the other three designs. The Scala Fun lives up to its name and brings fun to any room. The Scala Endurance adds a playful touch and the Scala Marathon adds value with its remarkable design. Mix & Match for an original and unique interior is the concept.

Just like the Scala Solutions qualities, this collection meets all the conditions required for its intended use: comfort, strong, colourfast and modern. All colours in the Scala Combinations are available at 4 metres wide in 2 different versions: I-Back & Synthetic Backing.



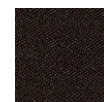
100 / Scala Endurance / Ruby



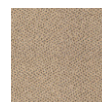
100
Ruby



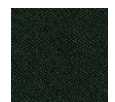
110
Carmine



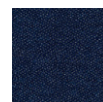
200
Chocolate



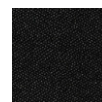
250
Magnolia



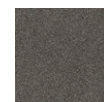
600
Pine



700
Navy



800
Ebony



820
Slate

TECHNICAL SPECIFICATIONS

Secondary backing:	I-Back & Synthetic Backing
Quality code:	SED-SEI
Manufacturing process:	Tufted
Manufacturing process (hospitality):	Tufted
Pile composition:	100% PP
Pile composition (hospitality):	100% PP
Fire behaviour:	Efl
EN 1307 Classification:	CL. 23 - CL. 32 Domestic Heavy / Commercial General (on underlay)

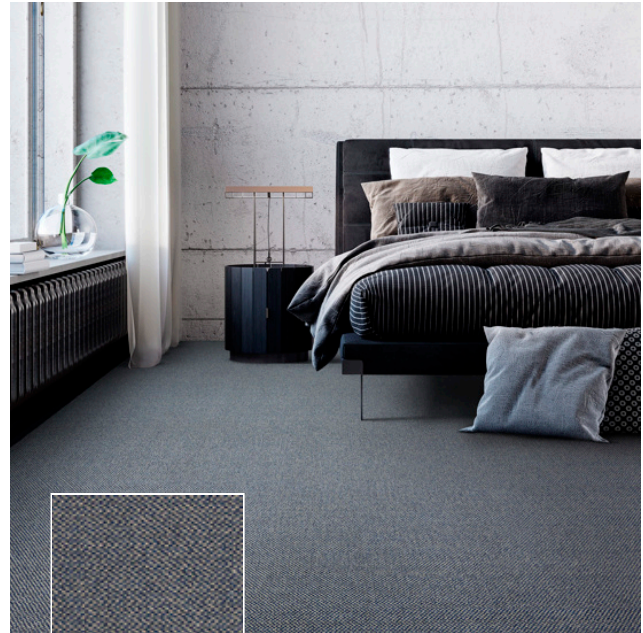
Scala Fun

Carpet for soft contract applications with a cool twist, that's the Scala Combinations collection. Scala Twist, Scala Fun, Scala Marathon and Scala Endurance, 4 different designs which when combined create a refreshingly innovative result. Puzzle away!

Scala Combinations offers endless possibilities and creativity. All 27 items are of the same durable quality and have the same specifications making them work seamlessly. The colour palette ranges from calm grey and beige tones to fun fresh yet classic colours carefully chosen to always form one beautiful and peaceful whole. Designed for use in Healthcare locations, leisure locations, communal areas and domestic settings.

The Scala Twist has a more classic appearance but looks modern in combination with one of the other three designs. The Scala Fun lives up to its name and brings fun to any room. The Scala Endurance adds a playful touch and the Scala Marathon adds value with its remarkable design. Mix & Match for an original and unique interior is the concept.

Just like the Scala Solutions qualities, this collection meets all the conditions required for its intended use: comfort, strong, colourfast and modern. All colours in the Scala Combinations are available at 4 metres wide in 2 different versions: I-Back & Synthetic Backing.



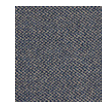
700 / Scala Fun / Navy



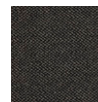
100
Ruby



600
Pine



700
Navy



800
Ebony



820
Slate

TECHNICAL SPECIFICATIONS

Secondary backing:	I-Back & Synthetic Backing
Quality code:	SFU-SFI
Manufacturing process:	Tufted
Manufacturing process (hospitality):	Tufted
Pile composition:	100% PP
Pile composition (hospitality):	100% PP
Fire behaviour:	Efl
EN 1307 Classification:	CL. 23 - CL. 32 Domestic Heavy / Commercial General (on underlay)

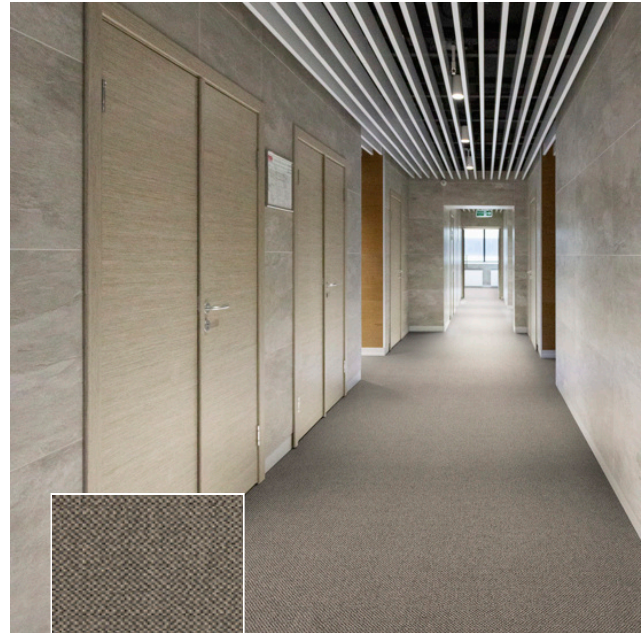
SCALA Marathon

Carpet for soft contract applications with a cool twist, that's the Scala Combinations collection. Scala Twist, Scala Fun, Scala Marathon and Scala Endurance, 4 different designs which when combined create a refreshingly innovative result. Puzzle away!

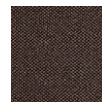
Scala Combinations offers endless possibilities and creativity. All 27 items are of the same durable quality and have the same specifications making them work seamlessly. The colour palette ranges from calm grey and beige tones to fun fresh yet classic colours carefully chosen to always form one beautiful and peaceful whole. Designed for use in Healthcare locations, leisure locations, communal areas and domestic settings.

The Scala Twist has a more classic appearance but looks modern in combination with one of the other three designs. The Scala Fun lives up to its name and brings fun to any room. The Scala Endurance adds a playful touch and the Scala Marathon adds value with its remarkable design. Mix & Match for an original and unique interior is the concept.

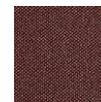
Just like the Scala Solutions qualities, this collection meets all the conditions required for its intended use: comfort, strong, colourfast and modern. All colours in the Scala Combinations are available at 4 metres wide in 2 different versions: I-Back & Synthetic Backing.



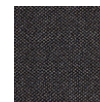
820 / SCALA Marathon / Slate



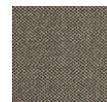
100
Ruby



110
Carmine



700
Navy



820
Slate

TECHNICAL SPECIFICATIONS

Secondary backing:	I-Back & Synthetic Backing
Quality code:	SMT-SMI
Manufacturing process:	Tufted
Manufacturing process (hospitality):	Tufted
Pile composition:	100% PP
Pile composition (hospitality):	100% PP
Fire behaviour:	Efl
EN 1307 Classification:	CL. 23 - CL. 32 Domestic Heavy / Commercial General (on underlay)

Scala Twist

Carpet for soft contract applications with a cool twist, that's the Scala Combinations collection. Scala Twist, Scala Fun, Scala Marathon and Scala Endurance, 4 different designs which when combined create a refreshingly innovative result. Puzzle away!

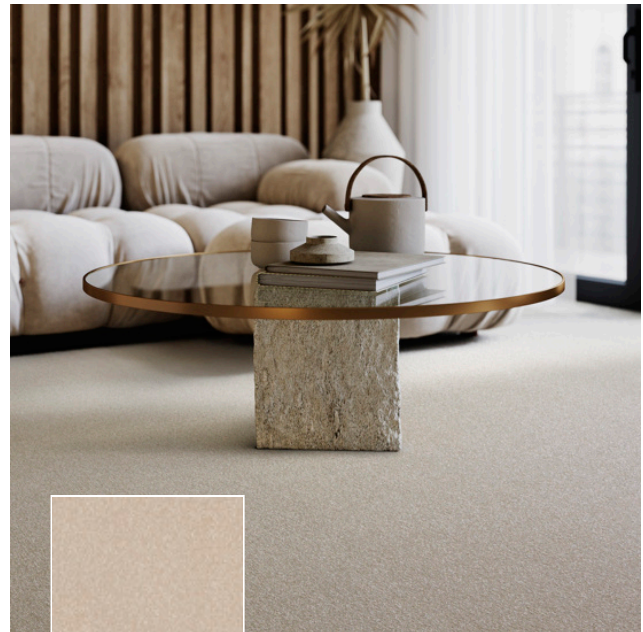
Scala Combinations offers endless possibilities and creativity. All 27 items are of the same durable quality and have the same specifications making them work seamlessly. The colour palette ranges from calm grey and beige tones to fun fresh yet classic colours carefully chosen to always form one beautiful and peaceful whole. Designed for use in Healthcare locations, leisure locations, communal areas and domestic settings.

The Scala Twist has a more classic appearance but looks modern in combination with one of the other three designs. The Scala Fun lives up to its name and brings fun to any room. The Scala Endurance adds a playful touch and the Scala Marathon adds value with its remarkable design. Mix & Match for an original and unique interior is the concept.

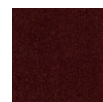
Just like the Scala Solutions qualities, this collection meets all the conditions required for its intended use: comfort, strong, colourfast and modern. All colours in the Scala Combinations are available at 4 metres wide in 2 different versions: I-Back & Synthetic Backing.

TECHNICAL SPECIFICATIONS

Secondary backing:	I-Back & Synthetic Backing
Quality code:	SRW-STW-SRI-STI
Manufacturing process:	Tufted
Manufacturing process (hospitality):	Tufted
Pile composition:	100% PP
Pile composition (hospitality):	100% PP
Fire behaviour:	Efl
EN 1307 Classification:	CL. 23 - CL. 32 Domestic Heavy / Commercial General (on underlay)



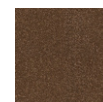
443 / Scala Twist / Ivory 3



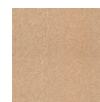
100
Ruby



110
Carmine



193
Chestnut
3



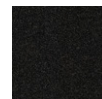
250
Magnolia



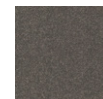
281
Havanna
1



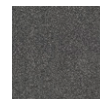
443
Ivory 3



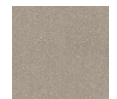
813
Charcoal
3



820
Slate



821
Slate 1



840
Moonshine

Serenade

TECHNICAL SPECIFICATIONS

Secondary backing: Smart Back

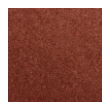
Quality code: SRA

Manufacturing process: Tufted

Pile composition: PP



240 / Serenade / Cream



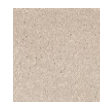
180
Rum



240
Cream



390
Copper



440
Ivory



450
Sand



451
Sand 1



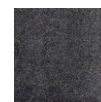
460
Hemp



490
Stone
path



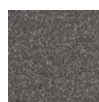
780
Steel



800
Ebony



820
Slate



840
Moonshine



850
Moonbeam



860
Granite



880
Pearl

Sofia

TECHNICAL SPECIFICATIONS

Secondary backing:	KT
Quality code:	SOK
Manufacturing process:	Tufted
Pile composition:	SmartStrand



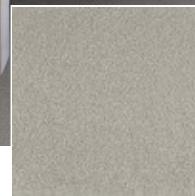
250 / Sofia / Magnolia

				
120 Coral	130 Rose	140 Old rose	180 Rum	240 Cream
				
250 Magnolia	260 Camel	290 Sepia	370 Gold leaf	410 Leather
				
430 Bamboo mat	440 Ivory	450 Sand	460 Hemp	500 Olive
				
620 Savanna	700 Navy	800 Ebony	810 Charcoal	820 Slate
				
860 Granite	870 Silver	871 Silver 1	890 Snow	

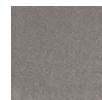
Soft Distinction

TECHNICAL SPECIFICATIONS

Secondary backing:	SB
Quality code:	SDI
Manufacturing process:	Tufted
Pile composition:	Eccelesina Silk



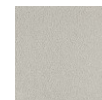
432 / Soft Distinction / Bamboo
mat 2



042
Anémone
2



212
Tobacco
2



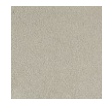
242
Cream 2



272
Almond 2



432
Bamboo
mat 2



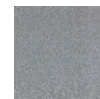
462
Hemp 2



832
Ash 2



842
Moonshine
2



844
Moonshine
4



852
Moonbeam
2



862
Granite 2



872
Silver 2



874
Silver 4

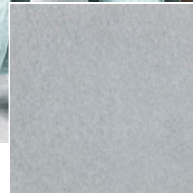


882
Pearl 2

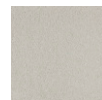
Soft Perfection

TECHNICAL SPECIFICATIONS

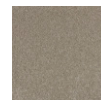
Secondary backing:	SB
Quality code:	SPE
Manufacturing process:	Tufted
Pile composition:	Eccelesna 2-ply



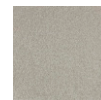
882 / Soft Perfection / Pearl 2



242
Cream 2



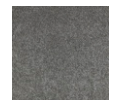
272
Almond 2



432
Bamboo
mat 2



462
Hemp 2



832
Ash 2



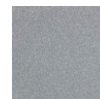
842
Moonshine
2



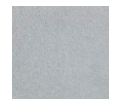
844
Moonshine
4



862
Granite 2



872
Silver 2



882
Pearl 2

Square

Polyamide carpet, known for its durability, can be used in any room. One of the most important advantages is the fact that the carpet fibers can stand up to a lot of wear and tear. This makes the use of nylon carpeting especially practical in areas where there is a lot of foot traffic since the synthetic fibers hold their shape longer than many other types of fibers. As a result, the pile of the polyamide carpeting looks new and fresh for many more years than other carpeting selections.

TECHNICAL SPECIFICATIONS

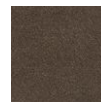
Secondary backing:	SB
Quality code:	SQS
Manufacturing process:	Tufted
Manufacturing process (hospitality):	1/10" Cut Pile
Pile composition:	PA
Pile composition (hospitality):	PA
Fire behaviour:	Bfl-s1
EN 1307 Classification:	Cl. 33 Commercial Heavy



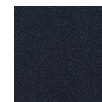
424 / Square / Cornstalk 4



122
Coral 2



282
Havanna
2



701
Navy 1



772
Sapphire
2



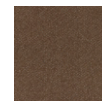
811
Charcoal
1



822
Slate 2



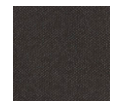
842
Moonshine
2



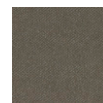
214
Tobacco
3



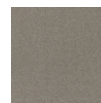
264
Camel 4



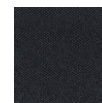
404
Coffee 4



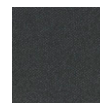
414
Leather 4



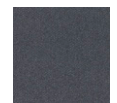
424
Cornstalk
4



804
Ebony 4



814
Charcoal
4



824
Slate 4

Startwist Elite

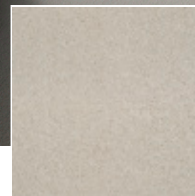
TECHNICAL SPECIFICATIONS

Secondary backing:

Quality code: LSAE

Manufacturing process: Tufted

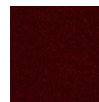
Pile composition: Essenz Solution Dyed



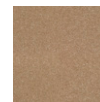
882 / Startwist Elite / Pearl 2



063
Heather 3



113
Carmine
3



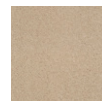
270
Almond



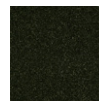
373
Gold leaf
3



433
Bamboo
mat 3



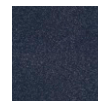
450
Sand



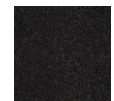
591
Moss 1



751
Sky 1



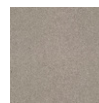
791
Midnight
1



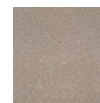
805
Ebony 5



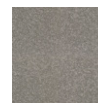
850
Moonbeam



862
Granite 2



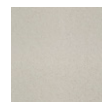
865
Granite 5



870
Silver



882
Pearl 2



890
Snow

Startwist Supreme

TECHNICAL SPECIFICATIONS

Secondary backing:

Quality code: STS

Manufacturing process: Tufted

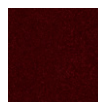
Pile composition: Essenz Solution Dyed



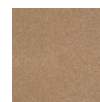
882 / Startwist Supreme / Pearl 2



063
Heather 3



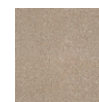
113
Carmine
3



270
Almond



373
Gold leaf
3



433
Bamboo
mat 3



450
Sand



591
Moss 1



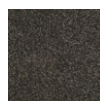
751
Sky 1



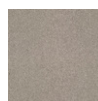
791
Midnight
1



805
Ebony 5



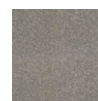
850
Moonbeam



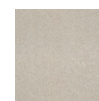
862
Granite 2



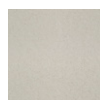
865
Granite 5



870
Silver



882
Pearl 2

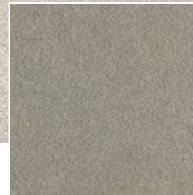


890
Snow

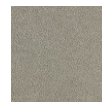
Sweet Dreams

TECHNICAL SPECIFICATIONS

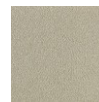
Secondary backing:	SB
Quality code:	SWD
Manufacturing process:	Tufted
Pile composition:	Eccekena Silk



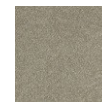
230 / Sweet Dreams / Flax



230
Flax



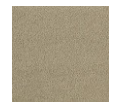
240
Cream



430
Bamboo
mat



440
Ivory



450
Sand



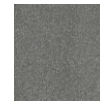
820
Slate



830
Ash



840
Moonshine



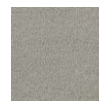
850
Moonbeam



860
Granite



870
Silver



880
Pearl

Sweet Elegance

TECHNICAL SPECIFICATIONS

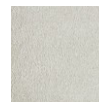
Secondary backing:	SB
Quality code:	SWE
Manufacturing process:	Tufted
Pile composition:	Eccelesina Silk



230 / Sweet Elegance / Flax



230
Flax



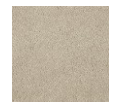
240
Cream



430
Bamboo
mat



440
Ivory



450
Sand



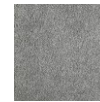
820
Slate



830
Ash



840
Moonshine



850
Moonbeam



860
Granite



870
Silver



880
Pearl

Traviata

Polyamide carpet, known for its durability, can be used in any room. One of the most important advantages is the fact that the carpet fibers can stand up to a lot of wear and tear. This makes the use of nylon carpeting especially practical in areas where there is a lot of foot traffic since the synthetic fibers hold their shape longer than many other types of fibers. As a result, the pile of the polyamide carpeting looks new and fresh for many more years than other carpeting selections.

TECHNICAL SPECIFICATIONS

Secondary backing:	SMB
Quality code:	TRV
Manufacturing process:	Tufted
Manufacturing process (hospitality):	Tufted
Pile composition:	PA
Pile composition (hospitality):	PA
Fire behaviour:	Bfl-S1
EN 1307 Classification:	CI 32



230 / Traviata / Flax

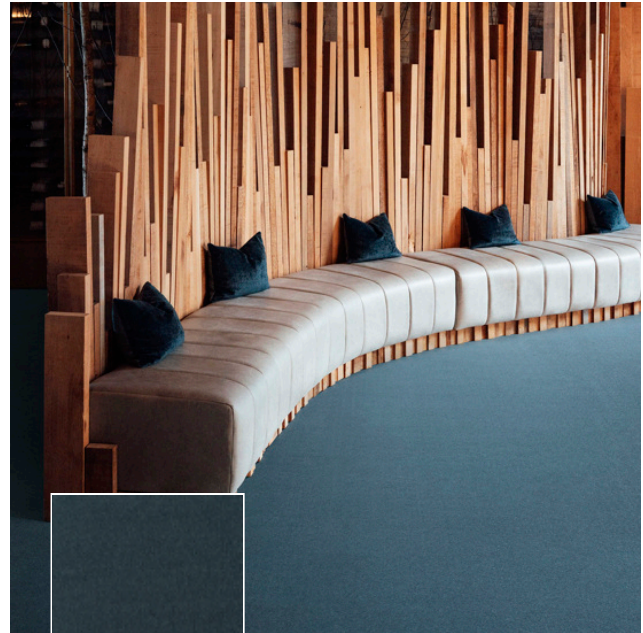
 070 Violet	 110 Carmine	 230 Flax	 250 Magnolia	 380 Bronze
 390 Copper	 410 Leather	 420 Cornstalk	 430 Bamboo mat	 440 Ivory
 480 Barley	 680 Juniper	 780 Steel	 790 Midnight	 810 Charcoal
 820 Slate	 830 Ash	 860 Granite	 870 Silver	

Zen

Polyamide carpet, known for its durability, can be used in any room. One of the most important advantages is the fact that the carpet fibers can stand up to a lot of wear and tear. This makes the use of nylon carpeting especially practical in areas where there is a lot of foot traffic since the synthetic fibers hold their shape longer than many other types of fibers. As a result, the pile of the polyamide carpeting looks new and fresh for many more years than other carpeting selections.

TECHNICAL SPECIFICATIONS

Secondary backing:	SB
Quality code:	ZEN
Manufacturing process:	Tufted
Manufacturing process (hospitality):	1/10" Saxony
Pile composition:	PA
Pile composition (hospitality):	PA
Fire behaviour:	Bfl-s1
EN 1307 Classification:	Cl. 33 Commercial Heavy



792 / Zen / Midnight 2

109 Ruby 9	110 Carmine	141 Old rose 1	164 Muscat 4	204 Chocolate 4
261 Camel 1	271 Almond 1	280 Havanna	423 Cornstalk 3	434 Bamboo mat 4
451 Sand 1	552 Apple mint 2	624 Savanna 4	742 Ocean 2	790 Midnight
791 Midnight 1	792 Midnight 2	800 Ebony	810 Charcoal	812 Charcoal 2
820 Slate	830 Ash	832 Ash 2	840 Moonshine	850 Moonbeam
871 Silver 1	872 Silver 2	892 Snow 2	442 Ivory 2	690 Satin jade
821	851	061	313	410